

# FURICCO<sup>®</sup>

## Ballet Price List

Designed by Hans Panton  
Effective March 26th, 2023



Ballet Series

Specifications ..... 2

Features ..... 3

Images ..... 6

Color Option ..... 8



BIFMA Compliant,\* the commercial furniture industry's registry of standards-conforming products.

## FEATURES

---

### Base

Aluminum black die cast legs

---

### Mechanism

**BOCK mechanism form Germany**. It can backward, lift and 2 position locking functions .

---

### Upholstery

The cowhide was **imported from Italy** and you can choose the different material like PU, the PU we used are from “Anli” company.

---

## Ballet Series

Designed by HnasPanton



## Ballet Series

Designed by Hnas Panton



IMAGES

## Ballet Series

Designed by Hnas Panton



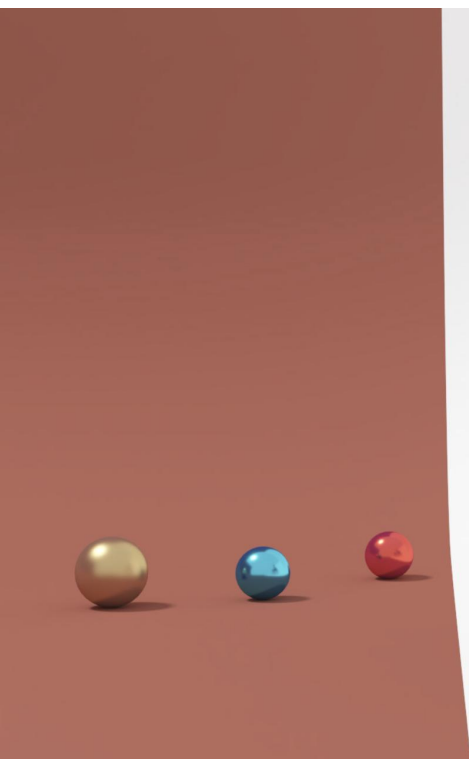
## Ballet Series

Designed by HnasPanton



The combination of subtle design and superb seating ergonomics makes it an ideal armchair for offices and ceremonial venues. **The Black aluminum alloy armrests** lend the chair an air of distinction.

Refined design, smooth and defined shapes, attention to details and a wide range that can **match with its functionality and versatility the requests** of any working environment.







The clever combination of different materials is very smooth and harmonious, without redundant encumbrances.

**Ballet** is a refined swivel chair, able to **stimulate the whole team in action**. Its key assets are stateliness and elegance.



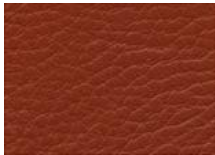


Color options

**Leather 3A** soft cowhide leather with a very natural appearance. Available in 14 colors.



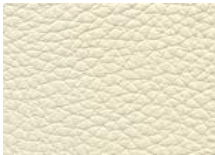
0873



2604



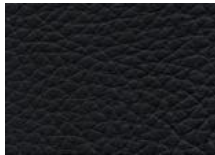
MND1210



MND1221



MND6610



MND9901



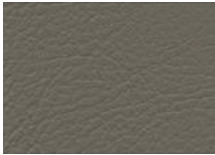
ND9711



ND9713



ND9714



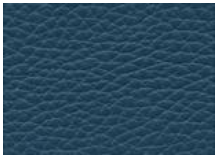
ND9715



ND9719



ND9720

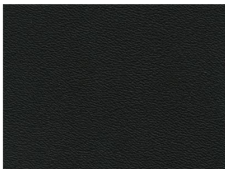


HST910



MD15

**NEW PU** smooth cowhide faux leather with a flat grain, lightly pigmented and soft to the touch. Long lasting for more than 5 years. Available in 9 colors.



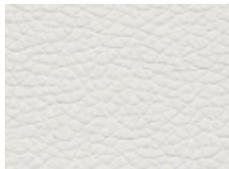
NX9710



NXPU9708



NXPU9715



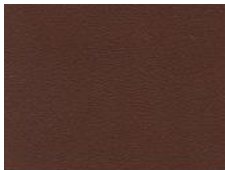
NXPU2305



NXPU9713



NXPU9718



NXPU9719



NXPU9720



NXPU915

# Ballet Series

Designed by HnasPanton

Item	Description	Dimensions	w	inches d	h	Packing way / Square Feet
FK011	Ballet Chair	Outside	20.40	19.29	49.6	1pc/2ctn 0.28 unit CBM



List Price  
Grades

QTY/FOB Price(usd)

PU	cover	484\$	467\$	450\$	433\$
3A Cowhide	cover	585\$	564\$	543\$	523\$

## Required to Specify

Fabrics or Leather : Ensure graded in material or COM/COL is approved for use on A-Lounge by contacting Furicco.

Metal Finish : Polished Aluminum foot.